

OITA UNIVERSITY

2014



OITA UNIVERSITY

CONTENTS

Emblem	1
Charter of OITA UNIVERSITY	
Charter of OITA UNIVERSITY	2
Basic Principles of OITA UNIVERSITY	2
Message from President	3
Chronology	4
Organization and Administration	
Organization Diagram	5
Executive Board	7
Faculties and Graduate Schools	
Faculty of Education and Welfare Science/ Graduate School of Education	9
Faculty of Economics/ Graduate School of Economics	11
Faculty of Medicine/ Graduate School of Medicine	13
Faculty of Engineering/ Graduate School of Engineering	15
Graduate School of Social Service Administration	17
Liberal Arts Education	18
University Library	19
Common Facilities for Education and Research	20
University Hospital	21
International Exchange	
Exchange Agreements/Accepted Overseas Students/ Students Sent to Overseas (2009–2013)	23
Statistics	
Number of Staff	25
Number of Students(Attached Schools)	26
Number of Students	27
Enrollments	28
Courses after Graduation	29
Finance	
Revenue and Expenditure for FY 2013/ Budget for FY 2014	30
Subsidy for Scientific Research	31
Estate and Buildings	32
Location	33
Transportation	34

Emblem



OITA UNIVERSITY

The emblem of Oita University was designed based on the initials of that.

The letter“O”, which also can be taken as a circle in its shape, symbolizes perpetuity of the progress of the University; and the blue color stands for intelligence, sincerity, pursuit spirits, and independence. On the other hand, the yellow color of “U” symbolizes hope, progress, and happiness.

Hence, in the emblem, we show our hope and will that Oita University will continuously pursue the new knowledge to contribute the global as well as the local welfare through education and research activities.

Designed by JINBO Yoneo,
in Matsudo, Chiba, Japan



Charter of OITA UNIVERSITY

Preamble:

The world has recently seen bewildering changes, and the role of the universities must also change.

Oita was once the center for Japan's inter-cultural exchange. Oita University hopes to continue and build on this tradition of initiative. The basic principles and goals for carrying out the university's mission are laid out here.

Students are drawn from a variety of academic backgrounds. It is therefore essential to establish a system for their education which will effectively answer individual needs. It will help students to develop their moral sense, their creativity, and their practical abilities. At the same time, it is necessary for the university to encourage advanced research in many fields. Our basic concern will be to secure freedom of research while ensuring that the results of research are disclosed. The university should be organized so as to maintain a balance between fundamental and applied research, and should work towards a rebuilding of knowledge. It is also important to promote active contributions to, and interaction with, both local and international society through mutual communication. To carry out these tasks, the university needs to have an ongoing reform, based on a regular review and evaluation of its system and method of management.

Oita University will begin a new chapter in its history with a renewed organization and system. We are dedicated to the further development of the university, and the creation of an environment filled with humanity.

Basic Principles of OITA UNIVERSITY

Oita University will foster people rich in creativity, social abilities, and humanity through education and research in the humanities, the social sciences, and the natural sciences. In addition, it will actively contribute to peace and development in the world. It will play an active role in promoting human welfare and creating new culture.

Goals of Education

1. Oita University will foster well-educated people with a broad outlook through a student-centered educational system which values the student's point of view, and will emphasize their human and moral development.
2. Oita University will foster people who are creative and also have practical abilities with a sound academic basis and highly professional skills.
3. Oita University will foster people with a continuing incentive to learn and with wide judgment, who can take an active part in the broad international world.

Goals of Research

1. Oita University will pursue the truth by creative research activities and will communicate the results to countries throughout the world.
2. Oita University will aim to create new academic areas by integrating present disciplines in order to facilitate inter-disciplinary research.

Goals of Social Contribution

1. Oita University, as a local center, will cooperate and coexist with local societies, contributing to their development by making available its achievements in education, research, and medical activity.
2. Oita University, as an international intellectual base, will promote exchange activities with overseas institutions. It will devote special efforts to accelerate exchanges in original ways with other Asian countries.

Management Policy

1. Oita University, within its educational, research, and management framework, will make a continuous effort to improve the quality of its activities. It will actively publicize information so as to fulfill its duty to be open and accountable to society at large.
2. Oita University will aim to construct a flexible management system fully able to deal with the changes which society will face in the future.

Creating good human resources with a distinctive feature in Oita University



It has just been ten and half years since all the national universities were incorporated. During these years, Oita University has worked towards further integration of the former Oita University and Oita Medical University, which were integrated 6 months

before incorporation. To achieve this goal, we rearranged the organization structure and administration system and we also enhanced our educational, medical and social coalition function. In 2005, the Government Evaluation Committee pointed out that we had been able to carry out. With great pleasure, we have received a much higher evaluation with increase year. Thanks to the efforts of the entire staff, however, we could accomplish all improvements that we had planned for almost perfectly the next year.

The 21st century is often called a Knowledge-based Society, which means new knowledge, information, and technology gain in importance in our community as the basis for the activities at every domain of society such as politics, economy and culture. The essential requirements for this society are the highly specialized knowledge with the basic academic abilities as well as flexible intellect. Particularly, amidst the rapid progression of internationalization, we are required to have flexibility and the positive attitude trying to understand the different perspective.

At a university, which serves the society as a higher education organization, education reform should always be an important issue to be tackled. Oita University, like many others, has been making the utmost efforts to improve its quality of education. We improved the quality of education by promoting the ability of the teaching staff, rearranging the student advisory system, and developing the students' career educational programs. In particular, we pursued improvements in curriculum with more emphasis on general education. Therefore, we formulated "the issue and strategy for educational reform," and "school of general education." At the same time, we have clarified the problems and tried to achieve a more enduring solution.

Although doing research is free intellectual activity of individuals, if the individual produces ample results, it will play a major role toward the resolution of importance issues including problems that beset our society. Oita University has made much progress in its research field. The projects in its three core domains – "Welfare Science," "Human Environment Science" and "Life Science" were reviewed and systematized. Since our staff has been involved in various big joint research projects, Oita University steps up research and fosters young researchers.

While promoting the collaboration between university and society, we encouraged creating many core new project, which let to gain grants for research and important project. It would be vital to foster interaction with our own community. We enhance the partnerships with our local government and regional companies. Oita University has resolved issues confronting the community by utilizing accumulated knowledge. We have also tried to support our area-based industry and provide for research in our community-based study.

As for international activity, we could gracefully accept foreign students.

Oita University Hospital has played a leading role in the local society for a long time. At the same time, we have taken on an increasingly important role to nurture future medical manpower. Since environment surrounding the medical care has been changing so rapidly, we require to responding to highly developed, specialized, computerized medical consultation. Furthermore, we have to meet diversifying individual patient needs and intend to secure a stable source of medical profession who will be bearers of hollowing local medical service. Moreover, we improve the quality of education in a medical school and work to foster human resources contributing our community medicine.

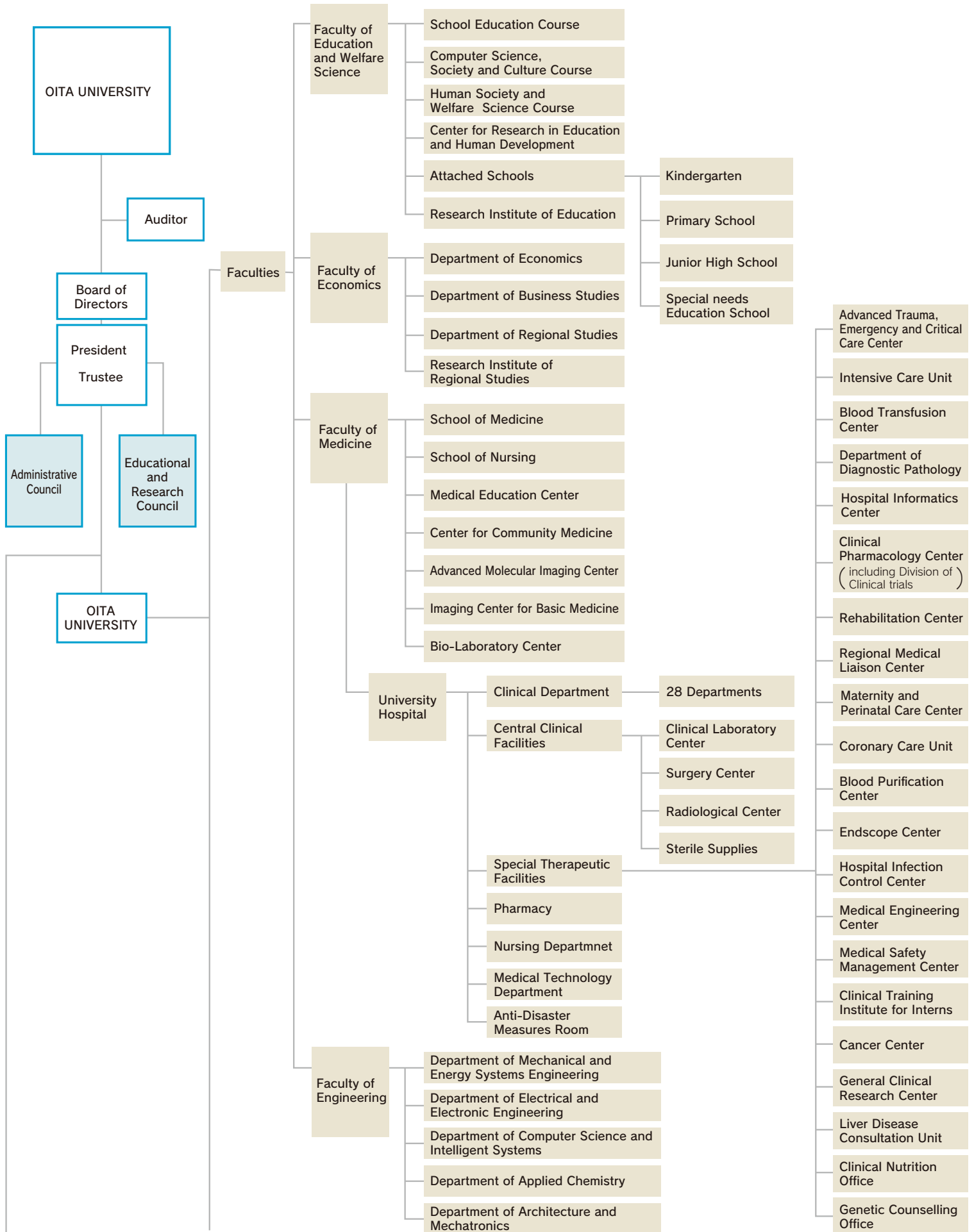
Oita University is highly expected to fulfill the changing demand in society with new wave of social action. At the highest level possible, not only we cope with a diversity of challenges, but also we intend to develop our university and human resources. Thank you very much.

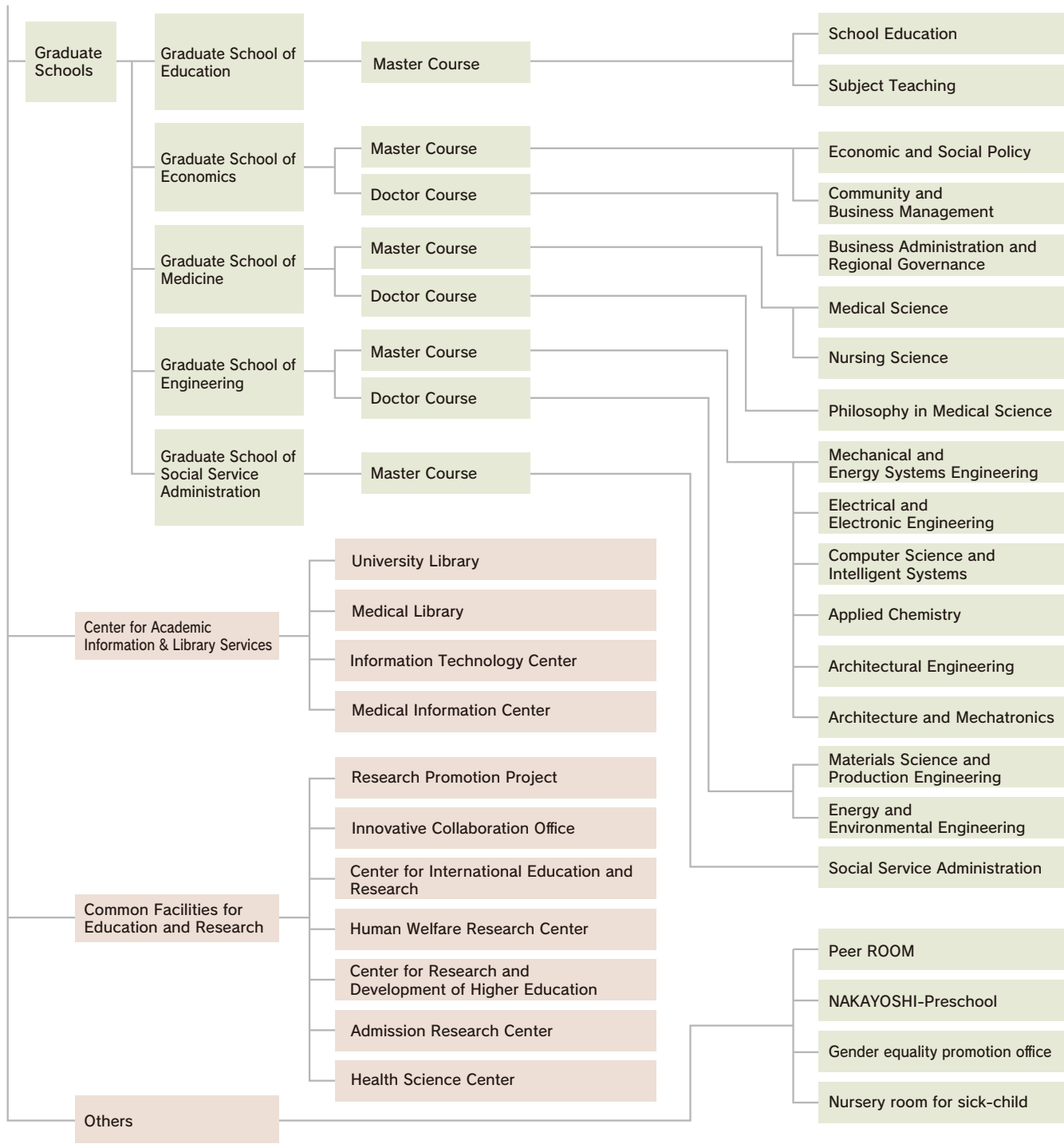
President

Chronology

	OITA UNIVERSITY	OITA MEDICAL UNIVERSITY
May,1949	Oita University (the Faculty of Liberal Arts, the Faculty of Economics) was established.	
March,1956	Postgraduate Scheme of Specialized Study in the Faculty of Economics was established (Abolished in May, 1977).	
April,1965	Postgraduate Scheme of Specialized Study in the Faculty of Liberal Arts was established (Renamed in April, 1966, Abolished in March, 1992).	
April,1966	The Faculty of Liberal Arts was renamed into the Faculty of Education.	
April,1969	Moving and unification of the university facilities at Dannoharu Campus were completed.	
May,1972	The Faculty of Engineering was established.	
April,1974	Health Science Center was established.	
October,1976		Oita Medical University was established.
May,1977	Graduate School of Economics (Master Course) was established.	
April,1979	Graduate School of Engineering (Master Course) was established (Reorganized into Master Course as Pre-Doctoral Courses in April, 1995). Research and Guidance Center for Classroom Teaching was established in the Faculty of Education.	
April,1981		University Hospital was established.
April,1984		Graduate School of Medicine (Doctor Course) was established.
April,1987		Research Laboratory Center was established.
June,1989		Emergency Center was established in the University Hospital.
June,1990	Information Processing Center was established.	Laboratory Animal Research Center was established.
April,1992	The Graduate School of Education (Master Course) was established.	University Hospital Intensive Care Unit was established.
April,1993	Research and Development Center was established.	University Hospital Blood Supply Center was established.
April,1994		School of Nursing was established.
April,1995	The Graduate School of Engineering (Doctor Course) was established.	
April,1996		Health Care Center was established.
October,1996	Research Center for Lifelong Learning was established.	
April,1998	Human Welfare Research Center was established.	Master's degree program for School of Nursing was established. Pathology Center was established.
April,1999	The Faculty of Education was reorganized into the Faculty of Education and Welfare Science. Satellite Venture Business Laboratory was established.	Hospital Informatics Center was established.
April,2000	Center for Instrumental Analysis was established.	
May,2000	International Student Center was established (Ministerially ordained in April, 2003) .	University Hospital General Medicine Center was established.
February,2001	University Education Development Support Center was established.	
April,2001	Center for Research in Education and Human Development was established (Research and Guidance Center for Classroom Teaching was reorganized.)	Clinical Pharmacology Center (including Division of Clinical Trials) was established.
April,2002	Graduate School of Social Service Administration (Master Course) was established. Information Processing Center was re-established. Center for Community Research was established. (Abolished in March, 2007).	The Medical Departments were reorganized into eight major departments. University Hospital Rehabilitation Center was established.
April,2003		Master's degree program for School of Medical Science established. Institute of Scientific Research was established. Regional Medical Liaison Center was established.
	OITA UNIVERSITY	
October,2003	New "OITA UNIVERSITY" was established.	
April,2004	National University Corporation OITA UNIVERSITY was established.	
April,2005	Research Center for Applied Medical Engineering was established. Center for Research and Development of Higher Education was established. (University Education Development Support Center was reorganized) The University Hospital Medical Training Center was established.	
April,2006	Innovation Organization was established. Department of Pharmaceutical Medicine was established. (Courses on Contribution)	
April,2007	The Graduate School of Economics (Doctor Course) was established. Department of Medical Oncology was established. (Courses on Contribution) Center for International Education and Research was established. (International Student Center was reorganized.)	
October,2007	Cancer Center was established.	
April,2008	All Oita University faculties educational organization was established. The Center for Academic Information & Library Services was established. General Clinical Research Center was established. Department of Endoprosthetic Surgery was established. Center for Research and Development of Higher Education was reorganized. Admission Research Center was established.	
May,2008	Emergency and Critical Care Center was established.	
October,2009	Research Promotion Project was established.	
February,2010	Center for Community Medicine was established.	
December,2010	Advanced Molecular Imaging Center was established.	
April,2011	Innovative Collaboration Office was established. Department of Pharmaceutical Medicine and Communication(Courses on Contribution)renamed.	
November,2011	Department of Medical Engineering(Courses on Contribution)	
April,2013	Laboratory on Development of Innovative Technology for Electromagnetic and Dynamic Applications was established. Gender equality promotion office was established.	
October, 2013	Designated as Advanced Trauma, Emergency and Critical Care Center.	

Organization Diagram





Executive Board

Directors

President
KITANO Seigo

Trustee
NISHIYAMA Susumu

Trustee
KOJO Kazunori

Trustee
OHASHI Kyoichi

Trustee
ANAN Hitoshi

Trustee
ISHIKAWA Koichi

Trustee
HATANO Masayo

Auditor
FURUSHO Kenji

Vice President

Vice President
KOJO Kazunori

Vice President
OHASHI Kyoichi

Vice President
ANAN Hitoshi

Vice President
TSUMURA Hiroshi

Vice President
MIYAMACHI Yoshihiro

Vice President
MOCHIZUKI Satoshi

Advisors to the President

Advisor to the President
OSAKI Yoshimi

Advisor to the President
MATSUURA Keiko

Advisor to the President
SHIRAISHI Norio

Advisor to the President
OCHI Yoshimichi

Advisor to the President
YASUOKA Masayoshi

Advisor to the President
OTSURU Toru

Special Advisor to the President

Special Advisor to the President
IMADO Keiji

Special Advisor to the President
KINUGASA Kazushige

Administrative Council

President
KITANO Seigo

Trustee
NISHIYAMA Susumu

Trustee
KOJO Kazunori

Trustee
OHASHI Kyoichi

Trustee
ANAN Hitoshi

Director, University Hospital
TSUMURA Hiroshi

Professor, Faculty of Medicine
SUZUKI Masashi

External Committee
ASHIKAGA Yukiko

External Committee
OGURA Yoshito

External Committee
KUWANO Izumi

External Committee
SAKATA Hisanobu

External Committee
TOYODA Koichi

External Committee
HAYASHI Hiroaki

External Committee
HIROSE Katsusada

External Committee
MITARAI Yasushi

Educational and Research Council

President
KITANO Seigo

Trustee
NISHIYAMA Susumu

Trustee
KOJO Kazunori

Trustee
OHASHI Kyoichi

Trustee
ANAN Hitoshi

Trustee
ISHIKAWA Koichi

Dean, Faculty of Education and
Welfare Science
YANAI Tomohiko

Dean, Faculty of Economics
ICHIHARA Koichi

Dean, Faculty of Medicine
MORIYAMA Masatsugu

Dean, Faculty of Engineering
TOYODA Masahiro

Dean, Graduate School of
Social Service Administration
ABE Makoto

Director, Center for Academic
Information & Library Services
MIYAMACHI Yoshihiro

Director, University Hospital
TSUMURA Hiroshi

Professor, Faculty of Education and
Welfare Science
DOI Haruhiro

Professor, Faculty of Education and
Welfare Science
YAMASHITA Shigeru

Professor, Faculty of Economics
OSAKI Yoshimi

Professor, Faculty of Economics
KIDO Teruko

Professor, Faculty of Medicine
ONO Ktsushige

Professor, Faculty of Medicine
SUGITA Satoshi

Professor, Faculty of Engineering
OTSURU Toru

Professor, Faculty of Engineering
RYU Takahiro

Professor, Graduate School of
Social Service Administration
MUKUNO Michiko

Vice Director, Center for Academic
Information & Library Services
KISHIDA Tetsuko

Director, Attached University Units
YAMAOKA Yoshio

Faculties・Graduate Programs・Attached Facilities etc.

Faculty of Education and Welfare Science・
Graduate School of Education

Dean
YANAI Tomohiko

Principal, Kindergarten
KUMA Kiyoki

Principal, Primary School
MATSUMOTO Tadashi

Principal, Junior High School
NAKANO Makoto

Principal, Special needs Education
School
TAKAHAMA Hideki

Director, Center for Research in
Education and Human Development
BABA Kiyoshi

Faculty of Economics・
Graduate School of Economics

Dean
ICHIHARA Koichi

Faculty of Medicine・
Graduate School of Medicine

Dean
MORIYAMA Masatsugu

Director, University Hospital
TSUMURA Hiroshi

Faculty of Engineering・
Graduate School of Engineering

Dean
TOYODA Masahiro

Graduate School of
Social Service Administration

Dean
ABE Makoto

Center for Academic
Information & Library Services

Director
MIYAMACHI Yoshihiro

Research Promotion Project

Director
OHASHI Kyoichi

Innovative Collaboration Office

Director
ANAN Hitoshi

Center for International
Education and Research

Director
YASUOKA Masayoshi

Human Welfare Research
Center

Director
SHIMODA Norio

Center for Research and
Development of Higher Education

Director
YAMASHITA Shigeru

Admission Research Center

Director
KOJO Kazunori

Health Science Center

Director
KUDO Yoshikuni

Administration Bureau

Director, General
NISHIYAMA Susumu

Inspection Office

Head, Inspection Office
YOSHINO Tsutomu

Department of General Affairs

Director, Department of General Affairs
MATSUZAKI Kazuyuki

Head, General Affairs Division
YAMASAKI Katsuya

Head, Planning Division
HIRAYAMA Koji

Head, Personal Affairs Division
TANAKA Eiji

Department of Research and
Social Collaboration Affairs

Director, Research and
Social Collaboration Affairs
HARADA Michio

Head, Research Cooperation Division
HIESHIMA Koji

Head, Social Collaboration Division
INADA Hirofumi

Head, International Office
TAKAHASHI Kaori

Head, Academic Information Division
KAWANO Yasuhisa

Department of Financial Affairs

Director, Department of Financial Affairs
NAGAMATSU Kazuo

Head, Financial Affairs Division
TANOUE Hiroshi

Head, Fund Management Division
MITO Takehiro

Head, Site and
Building Planning Division
SATO Haruyuki

Head, Site and
Building Administration Division
ANAN Toshitaka

Department of Student Affairs

Director, Department of Student Affairs
NAKAMURA Hiroyuki

Head, Educational Support Division
SATO Koichi

Head, Student Assistance and
Career Support Division
MIZUNO Masami

Head, Entrance Examination Division
MUKAI Toyomi

Department of Medicine and
Hospital Administration

Director, Department of Medicine and
Hospital Administration
ONO Kiyoshi

Head, General Affairs Division
MIURA Shinji

Head,
Administration Management Division
YOSHIDA Yoshimasa

Head, Hospital Affairs Division
NAKAHARA Toshihide

Head,
Student Educational Support Division
IZUKAWA Takatomi

Head, Administration Office,
Faculty of Education and Welfare Science
SHIBAYAMA Kumiko

Head, Administration Office,
Faculty of Economics
KAJIWARA Hiroshi

Head, Administration Office,
Faculty of Engineering
ANDO Yuka



Faculty of Education and Welfare Science / Graduate School of Education

The Faculty of Education and Welfare Science has the following three courses, each with subsidiary courses. In the School Education Course, there are three sub-courses: Human Development and Education, consisting of pedagogy, educational psychology and preschool education; Special Education; and Subject Teaching, consisting of Japanese language, social stud-

ies, mathematics, science, music, art, physical education, technical studies, home economics, and English language. The Computer Science, Society and Culture Course has three sub-courses: Society and Culture Studies; Information Science; and General Artistic Expression, including art, music, and physical expression. The Human Society and Welfare Science Course has three sub-courses: Social Welfare; Mental and Physical Studies for Welfare, consisting of a) psychology and b) sports and health sciences; and Domestic and Environmental Studies for Welfare, consisting of domestic science and environmental science. Students belong to one of the three Courses and study relevant subjects within the Course.

The purpose of the Faculty is to produce people who commit themselves to welfare who can work effectively to create a caring community in a well developed soci-



Faculty of Education and Welfare Science

Departments

School Education Course
 Computer Science, Society and Culture Course
 Human Society and Welfare Science Course

Courses

- Language Education
- Social Studies Education
- Science and Mathematics Education
- Human Development Education
- Music, Fine Arts and Physical Education
- Information Science and International Education
- Life style and Technology Education
- Welfare Science Education

○Indicates the courses used as the foundation of our master course.

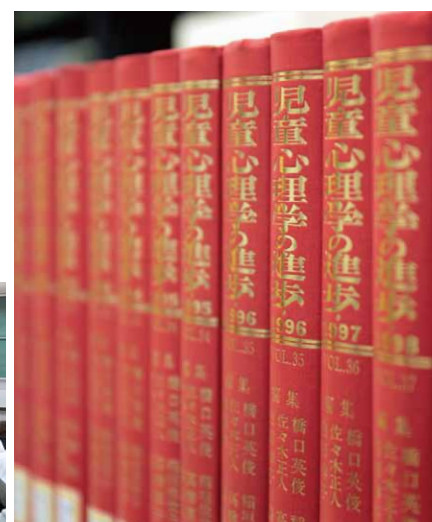
Graduate School of Education

Course

Master Course

Majors

School Education
 Subject Teaching



ety. The aim of the Teacher Training Course is designed to produce teachers who are highly qualified in the field of education and possess skills for cultivating the minds of pupils. The Computer Science, Society and Culture Course gives students the skills to adapt to an international and information-oriented society, while being able to develop local culture. The aim of the Human Society and Welfare Science Course is to foster a “social-welfare-minded” work force with a deeper insight into human existence, which has a spirit of cooperation to realize welfare in society.

The Graduate School of Education has two MA courses in school education and in subject teaching (Japanese language, social studies, mathematics, science, music, art, physical education, technological studies, home economics, and English language). Individual departments run programs in methodology and

practice, and have been providing students with opportunities to develop higher and professional skills necessary for educational research and training in the field of school education.

Also, the Psychological Educational Counseling Office was established to do counseling and researches on psychology, development and education, and to contribute to the local community.

The two attached institutions under the control of the Faculty are the Center for Research in Education and Human Development and the Education and Research Center. The attached schools are Kindergarten, Primary School, Junior High School and Special Needs Education School (School for Physically Handicapped and Mentally Disabled Children).



Faculty of Economics / Graduate School of Economics

The goal of the Faculty of Economics and the Graduate School of Economics is to foster an individual, 1) who understands and can deal with a future society in which the spread of information, globalization and an aging population continue to play a major role, 2) who possesses professional knowledge and, 3) who has acquired cultural understanding through small class education and an enriching campus life.

The Faculty of Economics consists of three departments: The Department of Economics, The Department of Business Management Systems, and The Department of Regional Studies. A stu-

dent selects his/her department during the latter half of the sophomore year through their choice of seminar. The Faculty of Economics provides an enhanced curriculum in which students can learn both theory and practice fully.

For the students of all grades, we have seminar classes, each of which has only about twelve students. This small class system enables students to develop individuality through direct interaction with professors.

The freshman year is for basic learning. Students become oriented to the campus and their studies; this includes registration guidance. The sophomore year contains an intermediate seminar in which an introduction to each professional area is given in dialog form. Finally, the junior and senior years both contain seminars which concentrate on professional edu-



Faculty of Economics

Departments

Economics

Business Management Systems

Regional Studies

Courses

- Economic Theories
- Comparative Economics
- Economic Policy

- Management:Organizational & Structural Analysis
- Business Dynamics
- Financial Information

- Local Information and Culture
- Local Management
- Provincial Administration

○Indicates the courses used as the foundation of our master course.

Graduate School of Economics

Courses

Master Course

Doctor Course

Majors

Economic and Social Policy
Community and Business Management

Business Administration and
Regional Governance



cation and research. A graduate thesis is also planned and written during this period.

For students who wish to pursue a PhD and post-graduate study we offer the Graduate School of Economics. Here, we can offer courses of both an academic and a vocational/professional related nature. Within the Graduate School one of the aims of the Master's degree courses is to foster the development of informed professionals who, equipped with a plethora of skills, can go on and contribute to the wider society. Students are offered two general programs: Economic and Social Policy, and Community and Business Management; both of which deal with issues of internationalization, the information society and regional cooperation. Within each program students are offered the chance to focus on a particular specialty: Economic and Social Policy – here we are able to offer

studies on International Economy and Policy Science, or Community and Business Management – here we are able to offer studies including Community Policy-Making, Business Management, and Accounting.

Our PhD program of Business Administration and Regional Governance is offered to those wishing to pursue a more advanced level of study. The goal of the program is to nurture specialists who are able to analyze complex regional, economic and social issues and formulate appropriate solutions.

We very much welcome all applicants who feel highly motivated to embark upon post-graduate and advanced level study. In recognition of this, we offer a special entrance exam for mature students and international students in addition to the regular entrance examination.



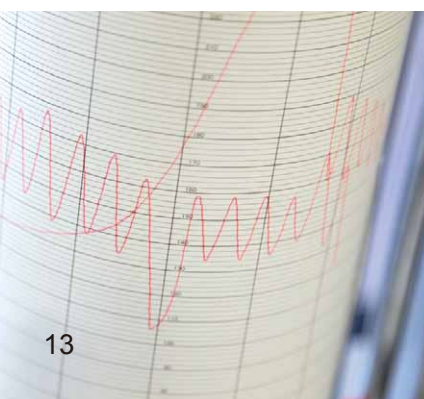
Faculty of Medicine / Graduate School of Medicine

Faculty of Medicine consists of two schools: School of Medicine and School of Nursing. The purpose of the School of Medicine is to educate students to be doctors with a well-defined sense of culture and humanity, a high degree of academic knowledge, motivation to continue lifelong learning, and a broad international scope so as to use a holistic approach to medicine by understanding patients and their problems. On the other hand, the purpose of the School of

Nursing is to convey professional knowledge and to demonstrate techniques, which enable students to maximize their nursing practice, so that they may provide patients with a healthy life, both

physically and mentally. In addition to this, we educate our students to be nurses with rich humanity so that they may contribute to the progress of nursing and improve health, medical care, and human welfare of the world as well as those of the world.

We presently promote and practice various kinds of revolutions and improvements in terms of academic curricula. For example, at the School of Medicine, we have shifted the course requirement from old-styled systematic method organized by medical departments into organ-oriented or function-oriented method in order to deal with the dynamic and rapid improvement of modern medicine. We also started and introduced some new style of instructions such as problem-bring-up style learning and tutorial education. The fundamental revolution in the School of Nursing is the integration and reorganization of basic, professional



Faculty of Medicine

Departments

School of Medicine

Courses

○ **Humanities and Basic Sciences for Medicine**

- Ethics
- Social and Clinical Psychology
- Applied Linguistics
- Biology
- Chemistry
- Physics
- Statistics

○ **Basic Medicine**

- Human Anatomy
- Molecular Anatomy
- Neurophysiology
- Pathophysiology
- Cell Biology
- Matrix Medicine
- Molecular Pathology
- Microbiology
- Infectious Disease Control
- Pharmacology
- Public Health and Epidemiology
- Environmental and Preventive Medicine
- Forensic Medicine

○ **Clinical Medicine**

- Endocrinology, Metabolism, Rheumatology and Nephrology
- Respiratory Medicine and Infectious Diseases
- Neurology
- Medical Oncology and Hematology
- Cardiology and Clinical Examination
- Gastroenterology
- Neuropsychiatry
- Pediatrics
- Radiology
- Clinical Pharmacology and Therapeutics
- Gastroenterological and Pediatric Surgery
- Thoracic and Breast Surgery
- Cardiovascular Surgery
- Neurosurgery
- Orthopaedic Surgery
- Dermatology
- Urology
- Ophthalmology
- Otorhinolaryngology & Head and Neck Surgery
- Obstetrics and Gynecology
- Anesthesiology and Intensive Care Medicine
- Emergency Medicine
- Oral and Maxillofacial Surgery
- Diagnostic Pathology
- Medical Informatics
- Pharmacy

○ **Contribution**

- Pharmaceutical Medicine and Communication
- Endoprosthetic Surgery
- Medical Engineering

School of Nursing

○ **Fundamental Nursing Sciences**

- Health Sciences
- Fundamental Nursing
- Psychiatric Mental Health Nursing
- Community Health Nursing

○ **Practical Nursing Sciences**

- Maternal Nursing
- Pediatric Nursing
- Adult Nursing
- Gerontological Nursing

Graduate School of Medicine

Courses

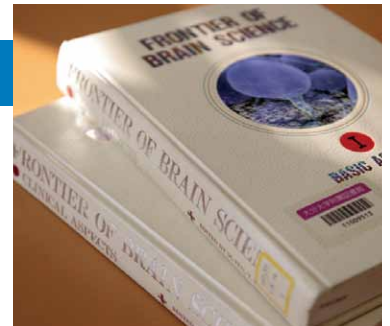
Master Course

Doctor Course

Majors

Medical Science / Nursing Science

Philosophy in Medical Science



basic, and professional advanced subjects. Also diverse trials for deepening students' understanding for "nursing" have been practiced in internship programs to foster nursing staff that can contribute at the clinical stage.

Graduate School of Medicine is composed of Master Course and Doctor Course. The Doctor Course has one professional courses. In this course there are four categories of classes ; Fundamental research, Clinical research, Cancer research and Compulsory elective. The main purpose of the Doctor Course is to foster a medical research professional or a clinician of high quality. While, Medical Science Course and Nursing Science Course make up the Master Course. The purpose of the Medical Science Course is to foster an educational, research and technical professional, who can take an active role in the area into which medical



and other scientific fields are integrated. The purpose of the Nursing Science Course is to foster a highly professional nursing staff and nursing educational professional, who possess broad professional knowledge and viewpoints on medicine.



Faculty of Engineering / Graduate School of Engineering

Faculty of Engineering now has five departments, and the Graduate School of Engineering has six master and two doctor courses. The faculty staff endeavor to motivate the students to pursue the solutions even for the unseen problems, to acquire the internationally acknowledgeable intelligence, and to grow the respectable humanity of contributing the

intelligence to their communities. The ultimate goal is to foster the professionals who are full of originality and creativity.

Each department focuses on the following specific goals:

Department of Mechanical and Energy Systems

Engineering focuses on acquiring knowledge of the specified core areas of mechanical engineering, and the general areas of engineering such as electricity and energy. The aim of this department is to cultivate students' ability to cope with various modern social problems, such as energy crisis and destruction of natural environment.

Department of Electrical and Electronic Engineering focuses on educating students to be engineers and researchers who have ability to contribute to human happiness and welfare. The practicable ability, technical skills and basic knowledge can be acquired through education and research programs related to the fields of the electronic devices, electronic systems and wave applications, electromagnetic dynamics, control and communication.

Department of Computer Science and Intelligent Systems focuses on fostering students' ability as pro-



Faculty of Engineering

Departments

Mechanical and Energy Systems Engineering

Electrical and Electronic Engineering

Computer Science and Intelligent Systems

Applied Chemistry

Architecture and Mechatronics

- Architecture Course
- Mechatronics Course

Courses

- Machine Systems
- Thermal Science and Engineering
- Energy Conversion Engineering

- Control Communication
- Electronic Device Engineering

- Basic Information Science
- Computing Systems

- Basic Engineering Chemistry
- Applied Biochemistry

- Architectural and Environmental Planning
- Structural Design

- Electromagnetic Dynamics
- Electronic Systems and Wave Applications

- Intelligent Systems

- Functional Materials Chemistry

- Biological Science and Information Engineering
- Human System Engineering

○ Indicates the courses used as the foundation of our master course.



Graduate School of Engineering

Courses

Master Course

Majors

Mechanical and Energy Systems Engineering
Computer Science and Intelligent Systems
Architectural Engineering

Electrical and Electronic Engineering
Applied Chemistry
Architecture and Mechatronics

Doctor Course

Materials Science and Production Engineering
Energy and Environmental Engineering

professionals of the new generation to contribute to the future intelligent IT revolution. This shall be done through a wide range of education, from the basic information science to the advanced application of computer science and intelligent systems.

Department of Applied Chemistry focuses on acquiring manner and knowledge for understanding chemical characteristic of materials and transforming it in industry and nature. The prior aim of this department is to cultivate students' ability to develop new materials and biotechnology, or to find a solution of environmental problems, with advanced professional knowledge.

Architecture Course of Department of Architecture and Mechatronics focuses on fostering students' creativity, necessary to seek for safe and comfortable human lives as well as to maximize the quality of

urban space. This shall be done through the education of broad knowledge related to architecture and design. Mechatronics Course curriculum focuses on fostering students' ability to develop robotic devices and assistive technology with the aim of improving the quality of life of all users. Our goal is to provide students with thorough knowledge of synergistic integration of mechanical, advanced computer control, rehabilitation engineering.

In the master courses, the students are to deepen their professional activities through the advanced lectures and the state of the art researches. The students who are seeking for their doctorates are to develop the creativity as well as the original research ability especially in material science and environmental engineering.



Graduate School of Social Service Administration

Graduate School of Social Service Administration

Course	Major
Master Course	Social Service Administration

Graduate School of Social Service Administration is the first national graduate school in Japan with the aim of training the welfare professionals in this new century. Graduate School of Social Service Administration was founded in 2002 and offers a Master's program to meet the rapidly changing and growing needs of today's society.

The objective of Graduate School of Social Service Administration is to be able to plan and promote welfare policies and social work. The curriculum of Graduate School of Social Service Administration is interdisciplinary. Employing a social welfare perspective to integrate traditional disciplines such as political science, psychology, economics, business administration, laws, sociology...etc.



The system of teaching and research in Graduate School of Social Service Administration is composed of the following three groups of subjects.

Introductory subjects

Subjects to learn methodology and a framework for studying Social Service Administration.

Special subjects

This group is composed of following three fields.

Macro Ex. Social policy, Social security, Law related to social service administration.

Mezzo Ex. Community based -social work, Planning of Social services, Management of social services

Micro Ex. Social work for disabled people, Social work for elderly people, Psychiatric social work

All students must take at least one subject from every field. We expect all students to study social issues by widely and various approach.

Instruction of master thesis

Seminar classes to complete the master's thesis of each student

And following systems for working students exist:

- Special admission for working people
- Evening lectures

Liberal Arts Education

The traditional objective of Liberal Arts Education is to foster a student's humanity multilaterally and to develop his/ her personality fully through education in wide variety of areas. Recently, however, many people expect Liberal Arts Education to deal with far more than the traditional issues. Those new scopes of Liberal Arts Education include basic education of each professional field, up-to-date problem solving methods and skills, and so on.

The subjects of Oita University Liberal Arts Education consist of five groups: "Common Subjects", "Introductory Subjects", "Foreign Languages", "Health and Physical Education Subjects" and "Basic Educational Subjects". To international students, "Subjects for Japanese Language and Culture", and "Subjects for IPOU (International Program at Oita University)" are also provided.

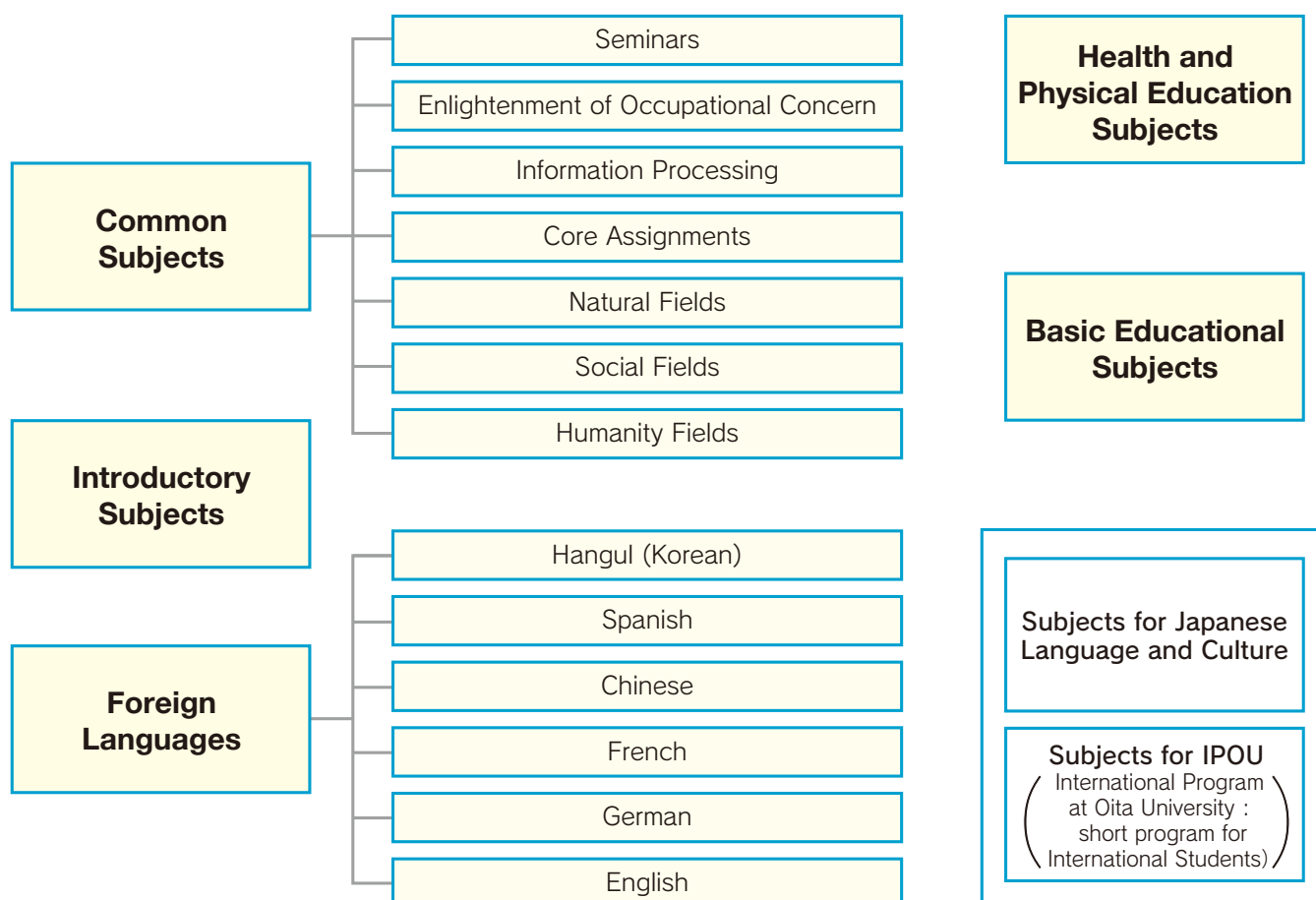
Oita University actively promotes educational reform to develop students' "human power". Therefore, among "Common Subjects", we set up various classes to foster their 'sense of time' and self-consciousness. 'Core Assignment' and 'Information Processing' deal with up-to-date issues. The class of

'Enlightenment of Occupational Concern' is important for students' career development. 'Oita University's People and Learning' aims at deepening their self-understanding.

Practically, we provide shuttle bus services between Hasama (the Faculty of Medicine) and Danno-haru campuses, which are far apart from each other, and remote lectures for the convenience of the students.

In addition, the system of Oita University Liberal Arts Education is "whole staff mobilization" system. In 2008, we newly established General Education Organization to make its executive processes more effective.

Based on "Charter of Oita University", we will continuously strengthen our research system and reform educational programs in the area of Human Educational Science, Welfare Science and Life Science. Our ultimate goal is to create an effective educational curriculum, which is based on the sole and firm educational philosophy commonly underlying all of the three steps of education: Liberal Art Education-Undergraduate Education-Graduate Education.



University Library

Outline

Oita University and Oita Medical University were integrated into “Oita University” in October 2003. According to this integration, pre Oita University Library came to be called “University Library”, on the other hand, pre Oita Medical University Library came to be called “Medical Library”.

Both libraries play a central role in education and research on campuses. They provide academic information and services to the faculty members and students as a place of self-education.

The libraries made some improvements to meet

users’ needs recently: books on welfare and books for students were increased in number. In addition, their open hours were extended.

The libraries aim to be “open and accessible libraries” for general public. To practice that, “University Library” has opened to the public since 1988 and “Medical Library” has opened since October 2003. Also, to promote their accessibility, recently they try some change such as simplification on user registration.

Library Open Hours

	University Library	Medical Library
Weekday	8:30–22:00	9:00–20:00
Weekday (During Vacation, Day before National Center Test for University Admissions and Individual Test for University Admissions)	8:30–19:00	9:00–20:00
Saturdays, Sundays and National holidays	10:00–19:00	10:00–17:00
Saturdays, Sundays and National holidays (During final exam on February and July)	10:00–21:00	10:00–17:00
New Year’s holiday (From Dec.29 to Jan.3)	Closed	Closed
O-Bon holiday (From Aug 13, 2014 to Aug 15,2014)	Closed	Closed
Days of National Center Test for University Admissions	Closed	10:00–17:00
Days of Individual Test for University Admissions	Closed	Weekday 9:00–20:00 Saturday and Sunday 10:00–17:00



University Library

Library collections

- Books : 666,000(including 166,000 foreign books)
- Periodicals : 9,957titles(including 3,340 foreign periodicals)
- Others : Audio-visual materials,CD-ROM and so on.



Medical Library

Library collections

- Books : 140,000(including 65,000 foreign books)
- Periodicals : 1,669titles(including 958 foreign periodicals)

Common Facilities for Education and Research



**Research
Promotion Project**



**Innovative
Collaboration Office**



**Center for International
Education and Research
(CIER)**



**Human Welfare
Research Center**



**Center for Research and
Development of
Higher Education**



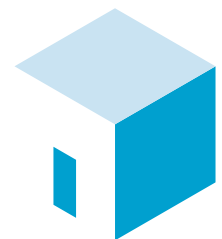
**Center for Research in
Education and
Human Development**



**Medical
Education Center,
Faculty of Medicine**



**Health Science
Center**



**Admission
Research Center**

University Hospital

The fundamental principle of University Hospital is “Providing the best available medical care of patient-centered”.

The purposes of University Hospital are to foster medical personnel with high ethics and to contribute the local social welfare by developing and providing new medical technology. Making them into more concrete terms, it realize its purposes by “practicing patient-centered medicine ”, “striving to develop new medical studies and medical care and to contribute to community medicine ”, “working to improve education, research and training ” and “promoting reformed and more efficient hospital management and administration”.

At the present time, University Hospital is demanded to practice a medical revolution and rationalization of hospital management and it is in the hardest conditions that it has ever experienced. As a hospital specializing in certain fields, however, anyone of our hospital staff tries to recognize the current conditions and strive to achieve the goals in one united body based on the principles of the University Hospital.



Clinical Departments

Respiratory Medicine	Pediatric Surgery
Endocrinology, Diabetology and Metabolism	Breast Surgery
Rheumatology	Cardiovascular Surgery
Nephrology	Neurosurgery
Neurology	Orthopedic Surgery
Gastroenterology	Plastic Surgery
Cardiovascular Medicine	Dermatology
Hematology	Renal Surgery and Urology
Medical Oncology	Ophthalmology
General Medicine	Otorhinolaryngology & Head and Neck Surgery
Psychiatry	Obstetrics & Gynecology
Pediatrics	Radiology
Gastroenterological Surgery	Anesthesiology
Thoracic Surgery	Oral and Maxillo Facial Surgery

Central Clinical Facilities

Clinical Laboratory Center	Coronary Care Unit
Surgery Center	Blood Purification Center
Radiological Center	Endoscopy Center
Sterile Supplies	Hospital Infection Control Center
Advanced Trauma, Emergency and Critical Care Center	Medical Engineering Center
Intensive Care Unit	Medical Safety Management Center
Blood Transfusion Center	Clinical Training Institute for Interns
Department of Diagnostic Pathology	Cancer Center
Hospital Informatics Center	General Clinical Research Center
Clinical Pharmacology Center	Liver Disease Consultation Unit
Rehabilitation Center	Clinical Nutrition Office
Regional Medical Liaison Center	Genetic Counselling Office
Maternity and Perinatal Care Center	

Pharmacy

Nursing Department

Medical Technology Department

Anti-Disaster Measures Room

Number of Beds

Beds for Regular Patients	588
Beds for Psychiatric Patients	30
Total	618



Exchange Agreements

As of May 1, 2014

U.K (4)

Bath Spa University College
1997.4.7
University of Hertfordshire
2009.5.23
University of Central Lancashire
2012.4.27
The University of Manchester
2014.4.24

Norway (1)

The University of Oslo
2007.10.19

Hungary (1)

Károli Gáspár University of the
Hungarian Reformed Church
2007.11.6

Sweden (1)

Mälardalen University
2006.9.5

Finland (1)

TAMK University of Applied
Sciences
2009.3.23

Germany (1)

Paderborn University
1997.9.9

Netherlands (3)

Tilburg University
1990.9.18
NHL University
2009.1.6
HU University of Applied
Sciences Utrecht
2011.3.17

Thailand (3)

Chiang Mai University
2005.8.5
Khon Kean University
2006.3.8
Chulalongkorn University (※1)
2009.11.10

Indonesia (4)

Institut Teknologi Bandung
2003.8.12
Faculty of Medicine,
Airlangga University (※2)
2008.5.12
Maranatha Christian
University
2011.9.28
Institute of Tropical Disease,
Airlangga University (※1)
2013.4.17

Taiwan (3)

Tunghai University
2003.2.20
Kaohsiung Medical University (※1)
2010.4.27
College of Medicine, National
Taiwan University (※1)
2011.10.17

Philippines (3)

San Lazaro Hospital
2006.9.25
St. Luke's Medical Center
2007.9.25
University of Santo Tomas (※1)
2013.9.13

China (12)

Jiangnan University
1989.11.24
Hebei Medical University (※1)
1992.1.26
Liaoning Normal University
1996.3.26
The University of Hong Kong
1999.6.24
Hebei Normal University
2000.7.17
Huazhong University of
Science and Technology
2002.3.12
Shenzhen University
2003.3.27
Nanyang Institute of Technology
2004.7.6
University of International
Business and Economics
2006.4.21
Zhongnan University of
Economics and Law
2006.8.31
Xinjiang Technical Institute
of Physics & Chemistry
2009.5.26
Wuhan University
2009.10.30
<Oita University Base for International
Exchange (Wuhan, China)>

Singapore (1)

Nanyang Polytechnic
2011.5.13

(※1) is an Exchange with Faculty of Medicine.

(※2) is an Exchange with Research Promotion Project.



Accepted Overseas Students

As of May 1, 2014

Home Country	Undergraduate			Graduate School			Occasional (non-degree)			exchange student (private)	Total
	Japanese Government Funds	Foreign Government Funds	Private Funds	Japanese Government Funds	Foreign Government Funds	Private Funds	Japanese Government Funds	Foreign Government Funds	Private Funds		
China			22	3		44			3	23	95
Republic of Korea			4			2	1			8	15
Malaysia		4	1			3					8
Indonesia				1		2	1				4
Vietnam			1	3							4
Singapore										2	2
Afghanistan				1							1
Thailand				1							1
U.S.A							1			8	9
Hungary							1			1	2
France										3	3
U.K										6	6
Lithuania										1	1
Italy										1	1
Poland							1				1
Ghana						2					2
Subtotal	0	4	28	9	0	53	5	0	3	53	155
Total		32			62			8			



Republic of Korea (14)

Korea National University of Transportation	1996.3.12
Seokyeong University	1997.2.28
Yeungnam University	2003.9.8
Seoul Women's University	2003.12.5
Korea University	2004.2.20
Ewha Womans University	2004.8.3
Sunchon National University	2005.8.19
Pai Chai University	2006.6.7
Gachon University	2006.6.8
Kangnam University	2007.2.23
Pusan National University	2007.4.5
Gangneung-Wonju National University	2007.8.9
Gwangju University	2008.3.14
Daegu University	2012.11.20

Italy (1)

The University of Pavia	2010.3.30
-------------------------	-----------

France (3)

Université Rennes 2	2010.4.15
Université Orléans	2011.7.1
Université du Maine	2011.11.2

Vietnam (5)

Hanoi Medical University	2008.10.23
Ho Chi Minh City University of Medicine and Pharmacy	2008.10.24
Cho Ray Hospital	2008.10.24
College of Economics, Vietnam National University, Hanoi	2009.7.20
108 Hospital	2009.11.16

U.S.A (6)

San Francisco State University	1972.11.27
University of Texas at Austin	1990.8.9
The University of North Carolina at Charlotte	2003.12.16
University Maryland, Baltimore	2004.5.23
San Diego State University	2006.8.25
University of Arkansas Fort Smith	2007.5.22

Dominican Republic (2)

Autonomous University of Santo Domingo	1989.12.14
Dr. Luis Eduardo Aybar Hospital (※1)	1996.12.13

Australia (2)

The University of Western Australia	2006.7.4
University of Wollongong	2010.4.21

Students Sent to Overseas (2009–2013)

As of May 1, 2014

Area and Country		Name of Partner University	Year	2009	2010	2011	2012	2013	Total
Asia	China	Shenzhen University				2	1		3
		University of International Business and Economics	1	4	4	3	1	13	
	Republic of Korea	Yeungnam University	(2)	(2)	(2)	(2)	1	1 (8)	
		Seoul Women's University	(5)	(3)	(7)	(8)	1 (9)	1 (32)	
		Korea University	1	4	2	4	2	13	
		Ewha Womans University				1	4	5	
		Pai Chai University	(2)	1	1 (2)	1 (3)	1 (1)	4 (8)	
		Pusan National University			(1)	1 (1)	2 (1)	3 (3)	
	Taiwan	Tunghai University	(3)	(6)	(13)	(3)	1 (8)	1 (33)	
	Indonesia	Maranatha Christian University					1	1	
Vietnam	College of Economics, Vietnam National University, Hanoi					1	1		
Singapore	Nanyang Polytechnic				1	4	5		
Oceania	Australia	The University of Western Australia		1				1	
North America	U.S.A	San Francisco State University		2	4	3			9
		The University of North Carolina at Charlotte	1	2	1	2	1	7	
Europe	Netherlands	Tilburg University					3		3
		NHL University	1	2		3	1	7	
		HU University of Applied Sciences Utrecht				2		2	
	U.K	Bath Spa University College	3					3	
		University of Hertfordshire		3	1	2	4	10	
	Germany	Paderborn University	5	4	3	4	5	21	
	France	Université Orléans			1	2		3	
Total				12 (12)	23 (11)	19 (25)	30 (17)	33 (19)	117 (84)

※ () are the number of Short-term program participants.

Number of Staff

As of May 1, 2014

Directors	President	Trustee	Auditor
	1	4	2 (1)

※ () are the number of part-time staff.

Classification	Academic Staff	Education Assistant	Teachers of Attached Schools	Administrative Technical Staff	Skill Vocation Staff	Medical Staff	Nursing Staff	Grand Total
				Non-Academic Staff				
Inspection Office				3				3
Department of General Affairs				32			1	33
Research and Social Collaboration				31				31
Department of Financial Affairs				47				47
Department of Student Affairs				30				30
Department of Medicine and Hospital Administration				95	23	12	1	131
Operating Support Office				3				3
Faculty of Education and Welfare Science	89		86	15				190
Faculty of Economics	60			7				67
Faculty of Medicine	173	1		17		1		192
University Hospital	144			14	2	140	636	936
Faculty of Engineering	100	4		44				148
Graduate School of Social Service Administration	2							2
Research Promotion Project	2	1		10				13
Innovative Collaboration Office	2							2
Center for Academic Information & Library Services	3			1				4
Center for International Education and Research	6							6
Human Welfare Research Center	1							1
Center for Research and Development of Higher Education	4							4
Health Science Center	3						2	5
Total of Detail	589	6	86	349	25	153	640	1,848
International Staff	7						1	8
Female Staff	101	4	38	129	6	75	586	939

Number of Students (Attached Schools)

As of May 1,2014

Kindergarten

Classification	Fixed Number	Actual Number			Number of Classes
		Male	Female	Total	
3 year old's	20	16	16	32	1
4 year old's	70	32	32	64	2
5 year old's	70	31	31	62	2
Total	160	79	79	158	5

Primary School

Classification	Fixed Number	Actual Number			Number of Classes
		Male	Female	Total	
first grade	105	53	50	103	3
second grade	105	52	52	104	3
third grade	105	53	51	104	3
fourth grade	120	59	58	117	3
fifth grade	120	57	60	117	3
sixth grade	120	57	60	117	3
Total	675	331	331	662	18

Junior High School

Classification	Fixed Number	Actual Number			Number of Classes
		Male	Female	Total	
first grade	160	80	80	160	4
second grade	160	80	80	160	4
third grade	160	80	79	159	4
Total	480	240	239	479	12

Special needs Education School

Classification	Fixed Number	Actual Number			Number of Classes	
		Male	Female	Total		
Elementary Course	first grade	-	3	3	1	
	second grade	-	1	2		3
	third grade	-	1	2	3	1
	fourth grade	-	3		3	
	fifth grade	-	3		3	1
	sixth grade	-		3	3	
	Total	18	11	7	18	3
Intermediate Course	first grade	-	4	2	6	1
	second grade	-	5	1	6	1
	third grade	-	5	2	7	1
	Total	18	14	5	19	3
	Advanced Course	first grade	-	4	2	6
second grade		-	5	2	7	1
third grade		-	2		2	1
Total		24	11	4	15	3
Total	60	36	16	52	9	

Number of Students

As of May 1, 2014

Undergraduate	1st Year	2nd Year	3rd Year	4th Year	5th Year	6th Year	Total
Faculty of Education and Welfare Science	257	258	253	294			1,062
School Education Course	108	113	107	122			450
Computer Science, Society and Culture Course	51	50	51	64			216
Human Society and Welfare Science Course	98	95	95	108			396
Faculty of Economics	319	365	303(8)	360(10)			1,347(18)
Economics	}	}	48(1)	104			}
Business Management Systems			134(4)	144(3)			
Regional Studies			121(3)	112(7)			
Faculty of Medicine	163	174	185(17)	193(19)	110(8)	98(8)	923(52)
School of Medicine	105	114	115(11)	115(12)	110(8)	98(8)	657(39)
School of Nursing	58	60	70(6)	78(7)			266(13)
Faculty of Engineering	387	388	553(12)	370(12)			1,698(24)
Mechanical and Energy Systems Engineering	83	88	131(3)	84(1)			386(4)
Electrical and Electronic Engineering	83	80	124(3)	86(2)			373(5)
Computer Science and Intelligent Systems	74	77	103(1)	65			319(1)
Applied Chemistry	61	62	69	56(1)			248(1)
Architecture and Mechatronics	86	81	126(5)	79(8)			372(13)
Total	1,126	1,185	1,294(37)	1,217(41)	110(8)	98(8)	5,030(94)

※ () are the number of 2nd and 3rd year transferred students.

Graduate School	1st Year	2nd Year	3rd Year	4th Year	Total
Graduate School of Education(Master Course)	35	51			86
School Education	10	12			22
Subject Teaching	25	39			64
Graduate School of Economics(Master Course)	17	30			47
Economic and Social Policy	5	14			19
Community and Business Management	12	16			28
Graduate School of Economics(Doctor Course)	1	1	10		12
Business Administration and Regional Governance	1	1	10		12
Graduate School of Medicine(Master Course)	13	29			42
Medical Science	6	16			22
Nursing Science	7	13			20
Graduate School of Medicine(Doctor Course)	25	19	25	61	130
Philosophy in Medical Science	25	19	25	55	124
Disease Control Medicine				2	2
Infection and Bio-Defence Medicine				2	2
Molecular Function and Medicine				2	2
Graduate School of Engineering(Master Course)	164	168			332
Mechanical and Energy Systems Engineering	43	34			77
Electrical and Electronic Engineering	29	38			67
Computer Science and Intelligent Systems	26	32			58
Applied Chemistry	29	24			53
Architectural Engineering	10	14			24
Architecture and Mechatronics	27	26			53
Graduate School of Engineering(Doctor Course)	6	7	18		31
Materials Science and Production Engineering	3	3	8		14
Energy and Environmental Engineering	3	4	10		17
Graduate School of Social Service Administration (Master Course)	8	25			33
Social Service Administration	8	25			33
Total	269	330	53	61	713

Enrollments

As of April 4, 2014

Undergraduate	Fixed Number	Number of Applicants			Number of Newly Enrolled Students		
		Male	Female	Total	Male	Female	Total
Faculty of Education and Welfare Science	245	507	862	1,369	82	175	257
School Education Course	100	238	324	562	42	66	108
Computer Science, Society and Culture Course	50	84	151	235	13	38	51
Human Society and Welfare Science Course	95	185	387	572	27	71	98
Faculty of Economics	305	996	452	1,448	190	129	319
Economics	130	996	452	1,448	190	129	319
Business Management Systems	130						
Regional Studies	45						
Faculty of Medicine	160	375	393	768	72	86	158
School of Medicine	100	358	210	568	68	32	100
School of Nursing	60	17	183	200	4	54	58
Faculty of Engineering	370	1,358	197	1,555	334(1)	53	387(1)
Mechanical and Energy Systems Engineering	80	350	11	361	80(1)	3	83(1)
Electrical and Electronic Engineering	80	291	20	311	79	4	83
Computer Science and Intelligent Systems	70	263	26	289	70	4	74
Applied Chemistry	60	143	49	192	40	21	61
Architecture and Mechatronics	80	311	91	402	65	21	86
Total	1,080	3,236	1,904	5,140	678(1)	443	1,121(1)

*Above mentioned number contains neither individual-funded-students nor government scholar. *() is an internal number of Government-sponsored Exchange Students.

Graduate School	Fixed Number	Number of Applicants			Number of Newly Enrolled Students		
		Male	Female	Total	Male	Female	Total
Graduate School of Education(Master Course)	39	23	31	54	17	18	35
School Education	6	10	16	26	5	5	10
Subject Teaching	33	13	15	28	12	13	25
Graduate School of Economics(Master Course)	20	16	7	23	11	6	17
Economic and Social Policy	8	8		8	5		5
Community and Business Management	12	8	7	15	6	6	12
Graduate School of Economics(Doctor Course)	3	1		1	1		1
Business Administration and Regional Governance	3	1		1	1		1
Graduate School of Medicine(Master Course)	25	4	9	13	4	9	13
Medical Science	15	4	2	6	4	2	6
Nursing Science	10		7	7		7	7
Graduate School of Medicine(Doctor Course)	30	12	12	24	12	12	24
Philosophy in Medical Science	30	12	12	24	12	12	24
Graduate School of Engineering(Master Course)	135	202	17	219	148	16	164
Mechanical and Energy Systems Engineering	27	53	2	55	41	2	43
Electrical and Electronic Engineering	27	44	2	46	27	2	29
Computer Science and Intelligent Systems	24	29	2	31	24	2	26
Applied Chemistry	21	39	5	44	25	4	29
Architectural Engineering	15	13		13	10		10
Architecture and Mechatronics	21	24	6	30	21	6	27
Graduate School of Engineering(Doctor Course)	8	5		5	4		4
Materials Science and Production Engineering	5	3		3	2		2
Energy and Environmental Engineering	3	2		2	2		2
Graduate School of Social Service Administration (Master Course)	12	3	9	12	3	5	8
Social Service Administration	12	3	9	12	3	5	8
Total	272	266	85	351	200	66	266

Courses after Graduation

As of May 1, 2014

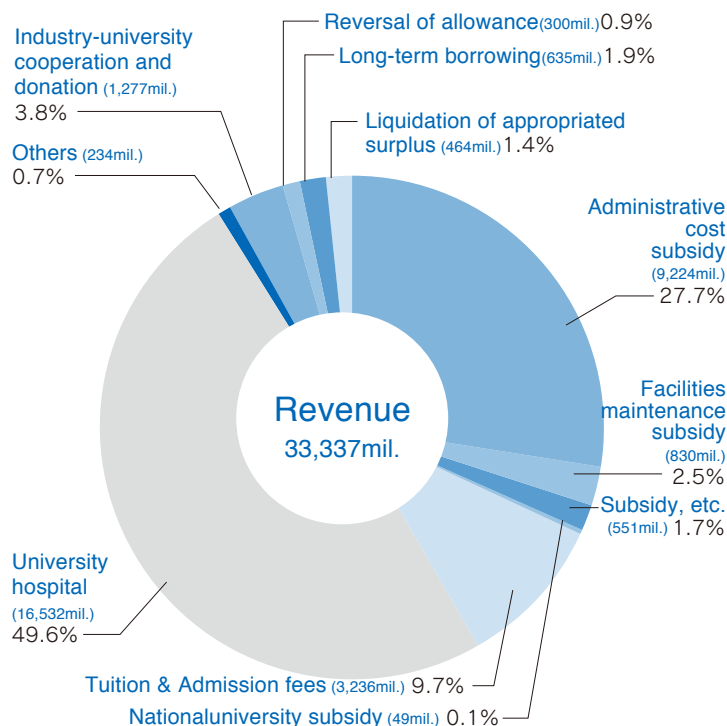
Classification	Faculty of Education and Welfare Science		Faculty of Economics			Faculty of Medicine			Faculty of Engineering			Graduate School of Social Service Administration	Total		
	Under-graduate	Graduate School (Master Course)	Under-graduate	Graduate School (Master Course)	Graduate School (Doctor Course)	Under-graduate	Graduate School (Master Course)	Graduate School (Doctor Course)	Under-graduate	Graduate School (Master Course)	Graduate School (Doctor Course)	Graduate School (Master Course)	Under-graduate	Graduate School (Master Course)	Graduate School (Doctor Course)
Number of graduates	252	33	309	18		154	17	19	378	152	6	5	1,093	225	25
Number of students going to Upper schools	32	2	1			3	1		177	3			213	6	
Self-employed or Other	19	6	51	6		5	2	1	27	7	3		102	21	4
Number of students finding positions	201	25	257	12		146	14	18	174	142	3	5	778	198	21
Classification of Occupation	Agriculture · Forestry														
	Fisheries														
	Mining														
	Construction														
	Manufacturing														
	Electric Enterprises, Gas Companies and Water Service														
	Information Technology and Communication Service														
	Transport Industry														
	Wholesale and Retail														
	Insurance and Finance														
	Real Estate														
	Academia · Expertism														
	Restaurant and Hotel														
	Life · Entertainment														
	Education														
	Medical and Welfare														
	Compound Service														
	Service														
Government and Civil Servant															
Other															

※The number of students finding positions includes temporarily positions.

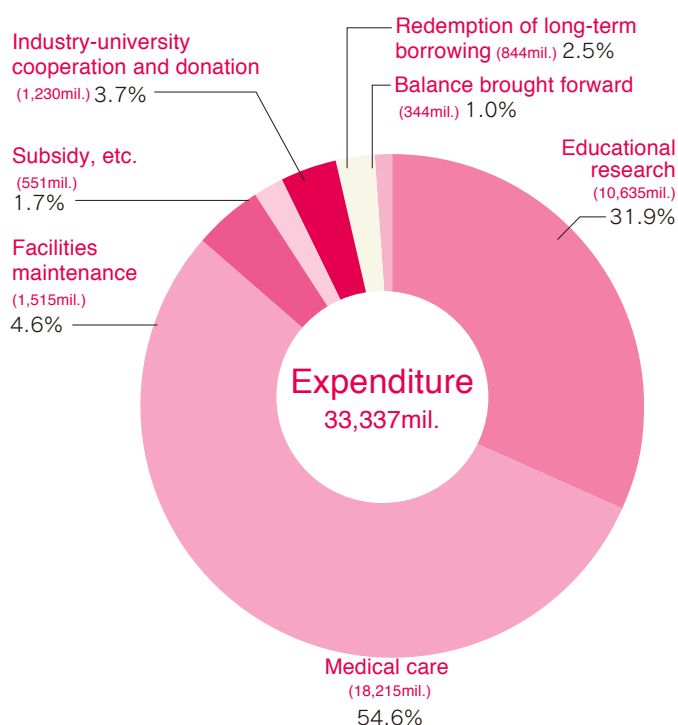
Revenue and Expenditure for FY 2013

As of May 1, 2014

Revenue



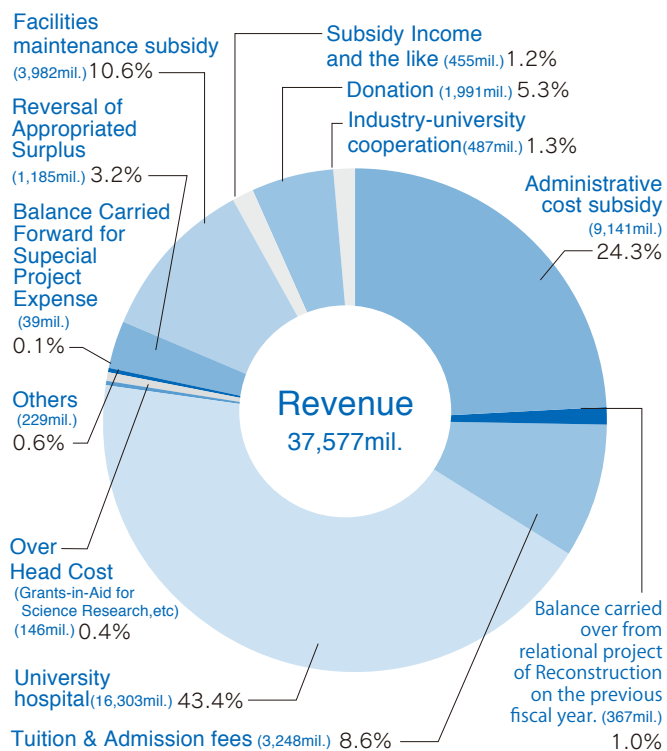
Expenditure



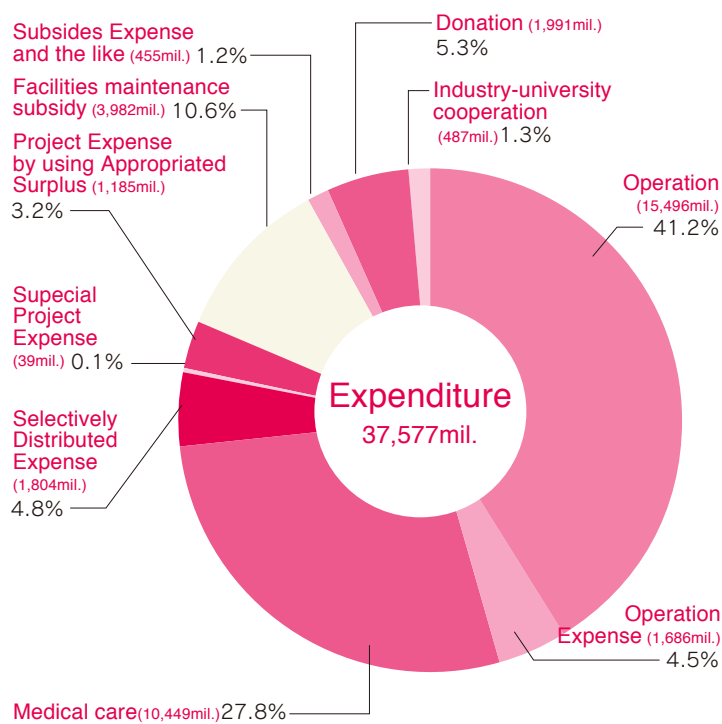
※If the amount includes a fraction of less than a million yen, it shall be discarded.

Budget for FY 2014

Revenue



Expenditure



※If the amount includes a fraction of less than a million yen, it shall be discarded.

Subsidy for Scientific Research

As of May 1, 2014

Subsidy for Scientific Research

	Classification	Number of Research Plans Adopted	Amount of Money Adopted(1,000yen)
Academic Year of 2014	Faculty of Education and Welfare Science	27	20,300
	Faculty of Economics	15	13,800
	Faculty of Medicine	144	184,100
	Faculty of Engineering	50	57,900
	Graduate School of Social Service Administration	1	1,200
	Research Promotion Project	2	5,200
	Innovative Collaboration Office	1	500
	Center for International Education and Research	2	2,100
	Human Welfare Research Center	1	1,400
	Health Science Center	1	1,200
	Total	244	287,700
Academic Year of 2013	Faculty of Education and Welfare Science	37	35,400
	Faculty of Economics	17	12,700
	Faculty of Medicine	146	180,800
	Faculty of Engineering	58	83,400
	Graduate School of Social Service Administration	1	800
	Research Promotion Project	5	8,700
	Innovative Collaboration Office	1	1,300
	Center for International Education and Research	2	1,900
	Health Science Center	1	500
	Total	268	325,500
Academic Year of 2012	Faculty of Education and Welfare Science	38	40,100
	Faculty of Economics	12	11,000
	Faculty of Medicine	131	162,200
	Faculty of Engineering	49	88,300
	Graduate School of Social Service Administration	2	1,900
	Research Promotion Project	7	12,300
	Center for International Education and Research	2	2,700
	Human Welfare Research Center	1	1,600
		Total	242

Commissioned Research, Joint Research and Contribution

Classification	Commissioned Research (General)		Joint Research		Contribution		Commissioned Research (Drug Testing)	
	Number	Amount of Money Adopted(1,000yen)	Number	Amount of Money Adopted(1,000yen)	Number	Amount of Money Adopted(1,000yen)	Number	Amount of Money Adopted(1,000yen)
Academic Year of 2013	72(30)	146,379	107(40)	102,847	1,108	643,978	226	74,021
Academic Year of 2012	67(25)	172,731	107(36)	75,302	1,026	636,997	202	70,076
Academic Year of 2011	62(28)	197,043	94(26)	59,083	1,008	575,325	191	83,115
Academic Year of 2010	60(27)	196,606	100(39)	70,048	1,035	578,384	187	125,777

※() is and internal number of continuing.



Estate and Buildings

As of May 1, 2014

Estate and Buildings

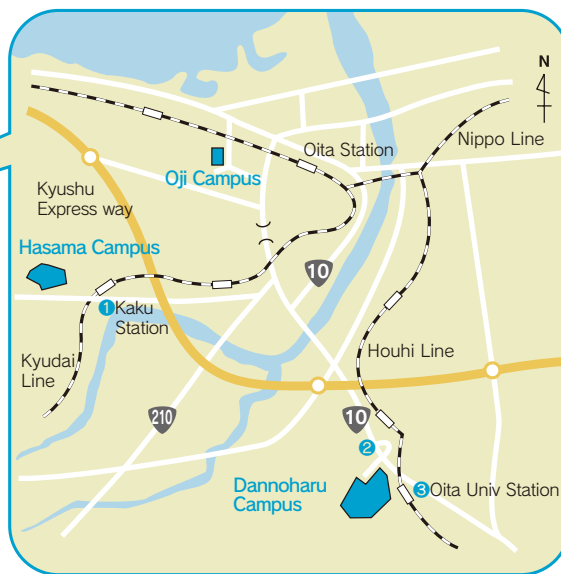
Classification	Buildings (m ²)	Estate (m ²)
Dannoharu Campus	93,040	646,253
Administration Bureau	9,629	
Faculty of Education and Welfare Science	14,475	
Faculty of Economics	6,956	
Faculty of Engineering	26,729	
Center for Academic Information & Library Services (University Library)	5,928	
Innovative Collaboration Office	2,637	
Center for Academic Information & Library Services (Information Technology Center)	1,768	
Liberal Arts Education	9,606	
Gymnasiums	3,002	
Health Science Center and Student Hall	2,187	
Convenience Store	176	
Dormitory	6,569	
Dormitory for Overseas Students	1,206	
Storage Space	2,172	
Hasama Campus	116,686	254,500
Faculty of Medicine	46,043	
Center for Academic Information & Library Services (Medical Library)	1,710	
University Hospital	63,877	
Gymnasiums	1,064	
Quarters for Nursing Staff	3,992	
Oji Campus	19,241	74,009
Center for Research in Education and Human Development • Stockpile warehouse	726	
Kindergarten	959	
Primary School	6,881	
Junior High School	6,954	
Special needs Education School	3,721	
Special needs Education School Facilities	0	1,820
Tsurumi Seaside Training Institute	999	3,899
Nakatsue Training Institute for Regional Education	658	1,693
International House	1,627	3,050
Personnel Quarters	456	793
Staff Quarters	19,013	49,471
Quarters on Dannoharu Campus (50)	2,830	7,729
Hasama Quarters (168)	11,229	24,694
Soda Quarters (50)	3,393	12,960
Shikido Quarters (20)	1,455	3,752
Onozuru Quarters (1)	106	336
Total	251,720	1,035,488

※() is a number of house for employee's housing.

Location

Name		Telephone	Address	
Information(Telephone Number)Guide Dannoharu Campus		+81-97-569-3311		
Information(Telephone Number) Guide Hasama Campus		+81-97-549-4411		
Inspection Office		+81-97-554-7649	〒870-1192 700 Dannoharu,Oita City	
Administration Bureau	Department of General Affairs	General Affairs Division	+81-97-554-7406	
		Planning Division	+81-97-554-7407	
		Personal Affairs Division	+81-97-554-7408	
	Department of Research and Social Collaboration Affairs		Research Cooperation Division	+81-97-554-7473
			Social Collaboration Division	+81-97-554-7430
			International Office	+81-97-554-7444
			Academic Information Division	+81-97-554-7482
	Department of Financial Affairs		Financial Affairs Division	+81-97-554-7432
			Fund Management Division	+81-97-554-6143
			Site and Building Planning Division	+81-97-554-7431
			Site and Building Administration Division	+81-97-586-5320
				〒879-5593 1-1 Idaigaoka,Hasama-machi,Yufu City
	Department of Student Affairs		Educational Support Division	+81-97-554-7442
			Student Assistance and Career Support Division, in charge of Student Assistance	+81-97-554-7452
		Student Assistance and Career Support Division, in charge of Career Support	+81-97-554-7743	
		Entrance Examination Division	+81-97-554-7519	
Department of Medicine and Hospital Administration		General Affairs Division	+81-97-586-5110	
		Administration Management Division	+81-97-586-5210	
		Student Educational Support Division	+81-97-586-5510	
		Hospital Affairs Division	+81-97-586-5410	
Re-maintenance Promotion room		+81-97-586-6097		
Administration Office, Faculty of Education and Welfare Science		+81-97-554-7504	〒870-1192 700 Dannoharu,Oita City	
Administration Office, Faculty of Economics		+81-97-554-7652		
Administration Office, Faculty of Engineering		+81-97-554-7752		
Faculty of Education and Welfare Science		+81-97-554-7504		
Kindergarten		+81-97-544-4449	〒870-0819 1-1 Oji-shinmachi,Oita City	
Primary school		+81-97-543-6732		
Junior High School		+81-97-543-6731		
Special needs Education School		+81-97-543-8317		
Center for Research in Education and Human Development		+81-97-543-4933		
Faculty of Economics		+81-97-554-7652	〒870-1192 700 Dannoharu,Oita City	
Faculty of Medicine		+81-97-549-4411	〒879-5593 1-1 Idaigaoka,Hasama-machi,Yufu City	
The University Hospital Medical Training Center		+81-97-586-6344		
Center of Community Medicine		+81-97-586-6306		
Advanced Molecular Imaging Center		+81-97-586-6314		
University Hospital		+81-97-549-4411		
Faculty of Engineering		+81-97-554-7752	〒870-1192 700 Dannoharu,Oita City	
Graduate School of Social Service Administration		+81-97-554-7442		
Liberal Arts Education		+81-97-554-7992		
Center for Academic Information & Library Services	University Library	+81-97-554-7482		
	Information Technology Center	+81-97-554-7985		
	Medical Library	+81-97-586-5570	〒879-5593 1-1 Idaigaoka,Hasama-machi,Yufu City	
	Medical Information Center	+81-97-586-6231		
Research Promotion Project	Promotion section of the important research/ Supporting section of the research except machine analysis	+81-97-549-4411		
	Promotion section of the important research/ Supporting section of the research with machine analysis	+81-97-554-7361	〒870-1192 700 Dannoharu,Oita City	
Innovative Collaboration Office		+81-97-554-7969		
Center for International Education and Research		+81-97-554-7429		
Human Welfare Research Center		+81-97-554-7450		
Center for Research and Development of Higher Education		+81-97-554-8522		
Health Science Center		+81-97-554-7476		
Admission Research Center		+81-97-554-7016		
Gender equality promotion office		+81-97-554-8573		
Beppu Personnel Quarters		+81-977-66-0713	〒874-0844 2 Honome-machi,Beppu City	
International House			〒870-0024 1-7-36 Nishiki-machi,Oita City	
Liaison Office in Oita City		+81-97-536-1312	〒870-0046 4-36 Niage-machi,Oita City	

Transportation



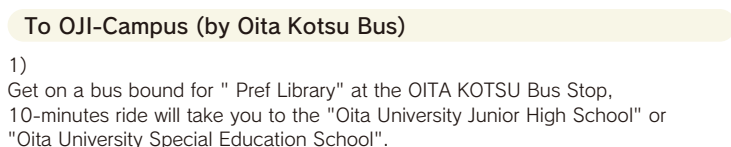
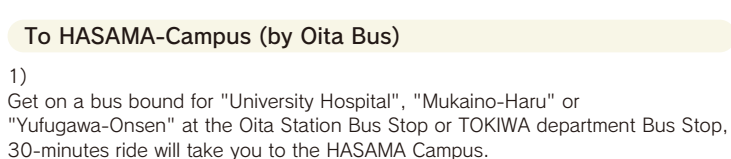
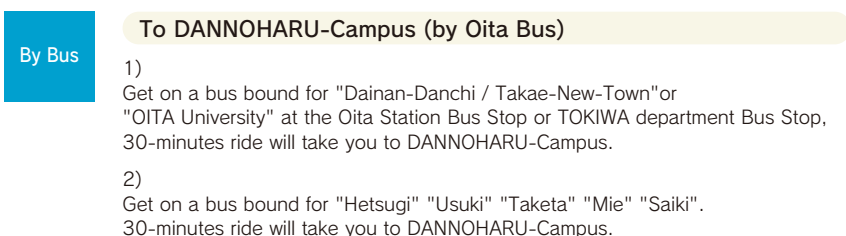
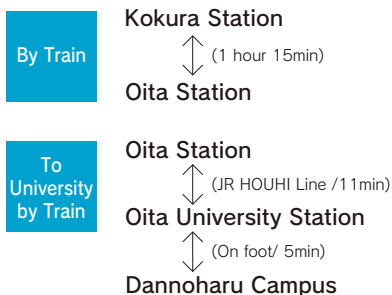
1 View HASAMA Campus from an overpass.



2 Turn left at this sign.



3 Oita Univ Station.





OITA UNIVERSITY

700 Dannoharu OitaCity Oita-Pref Japan
TEL/+81-97-554-7376
<http://www.oita-u.ac.jp/>